

YW-WLS Series

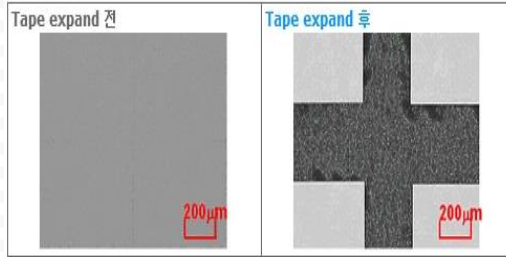
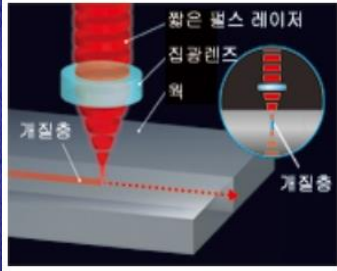
WAFER LASER SAW SYSTEM

High Speed Precision Control system

Real Time Monitoring Vision System

User Friendly GUI System

Tape Expansion

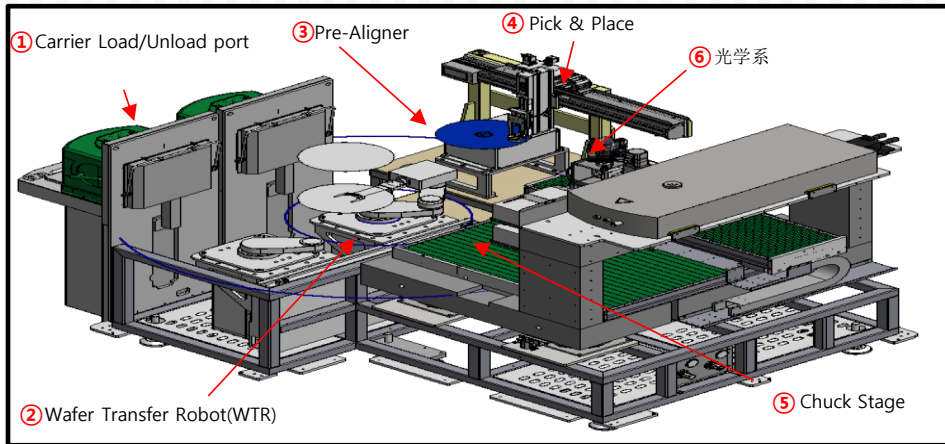


Stealth Laser Dicing

Laser加工Wafer内部聚光后形成内部改质层 后Tape Expand等Chip分割实行的 Dicing Method

- 不用Cleaning的Dry Process, Water兼有Device有用
- Kerf Width 最大变细, 大幅Street Reduction可能
- Wafer内部特性变化来加工Debris抑制

Machine Basic Block Diagram



Machine Core Technology

1. Vision System 技术

- Laser Beam的焦距调整使用Actuator(Voice Coil Motor)精密制御
- 使用Vision Camera(SWIR)和 IR Light Source实时的确认Scribing 流程

<Vision system 及制御Program 结构图>



2. Motion System 技术

- Laser Beam的焦距调整使用VCM精密制御
- NIR Camera和Halogen是Coaxial方式Scribing工程实时的 Monitoring

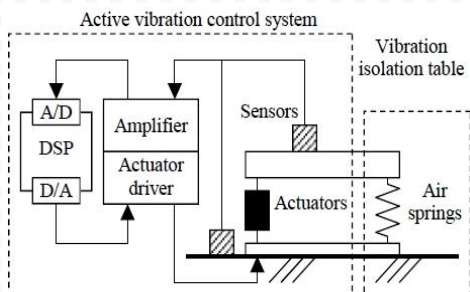
<Voice Coil Motor>



3. 细微振动制御技术

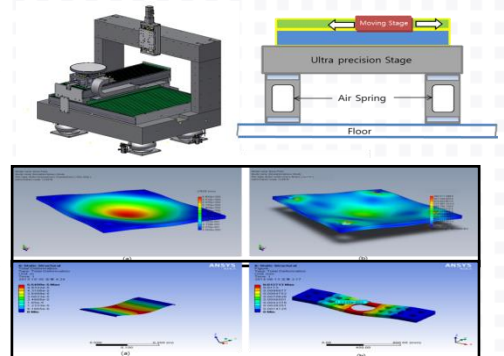
- 发生振动测定有DSP电脑后Actuator做位相波向后振动相殺

<细微振动抑制 Isolator 结构图>



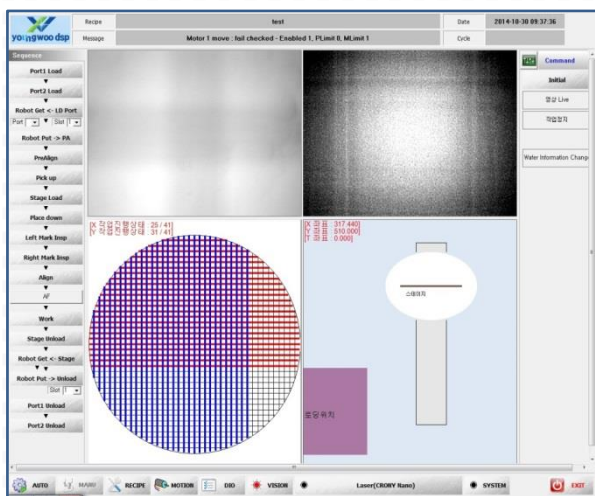
4. 精密Stage设计技术

<Frame, Plate下垂 (Deflection) Simulation>

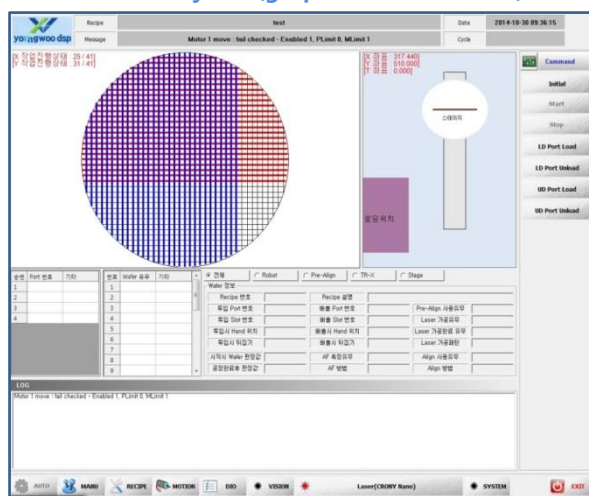


Self Development GUI

1. Laser Processing Hierarchy

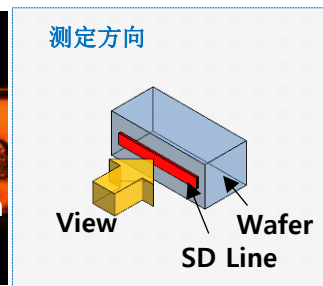
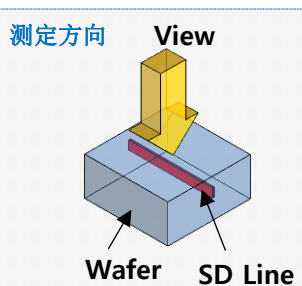
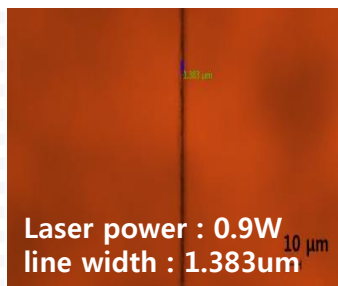


2. User friendly GUI(graphic user interface)

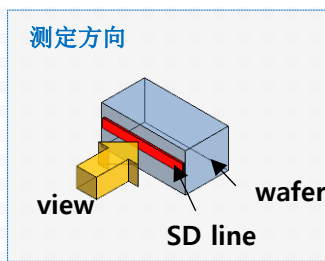
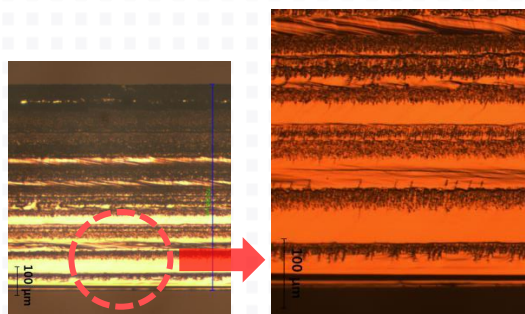
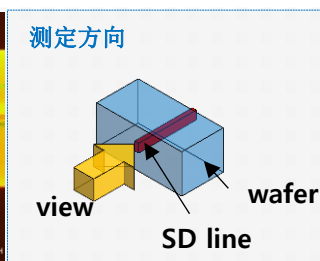
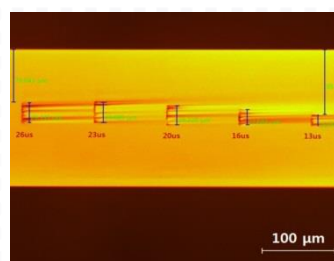


Development Status

<Sapphire Wafer Technology>



<Silicon Wafer Technology>



Company Introduction

WAFER LASER SAW SYSTEM

Vision

Inspection System
Leading Company

OLED / LCD / 반도체 / LED / 태양광
Inspection Complete Solution



开心 (FUN)

速度 (SPEED)

创新 (CREATIVE)

热情 (PASSION)

History

2014/2015	14. 10	国外市场推销展开 上市于韩国证券 (KOSDAQ)
2010/2011	11. 05 10. 11 10. 11	天安工厂及研究中心设立 专业研究员兵役特例指定企业注册 天安工厂竣工
2008/2009	09. 02 08. 10 08. 04	VISION研究所设立 京畿道有前途的中小企业选定 国外设置Launching (SESL)
2007	07. 11 07. 03	INNO-BIZ (创新企业) 认证 零件, 材料专业企业注册
2006	06. 12 06. 11 06. 05 06. 03	加入三星电子协力社 产业技能员兵役特例指定企业注册 通过ISO 14001/2004认证 LCD Module Tester以外2件专利
2005	05. 12 05. 11 05. 09 05. 07 05. 01	获奖最佳创业公司奖 (企业管理局颁发) Clean营业所认证 通过ISO 9001/2000认证 透明经营认证 龙仁工厂 / 研究中心设立
2004	04. 12 04. 12 04. 02	风险企业注册 LCD Panel Tester专利注册 永友DSP股份公司设立

Business Status

OLED	<ul style="list-style-type: none"> - AVT / CLR / MVI (MOBILE CELL) - AMT / AFT (MOBILE MODULE) - ICP / ICE (前工程) - TV O2 Aging System / 补正复合机 (OLED TV LINE) - Surface Inspection & PACKING
LCD	<ul style="list-style-type: none"> - AVT/AGT (CELL) - AMT /MMT (TV MODULE) - Surface Inspection & PACKING - ACC (Cell) - ACS (Cell)
LED	<ul style="list-style-type: none"> - LED Applicator - LED wafer 压榨机 (Presser) - Wafer Scriber
半导体/太阳能	<ul style="list-style-type: none"> - Wafer Scriber



YOUNGWOODSP

<http://www.ywdsp.com>